

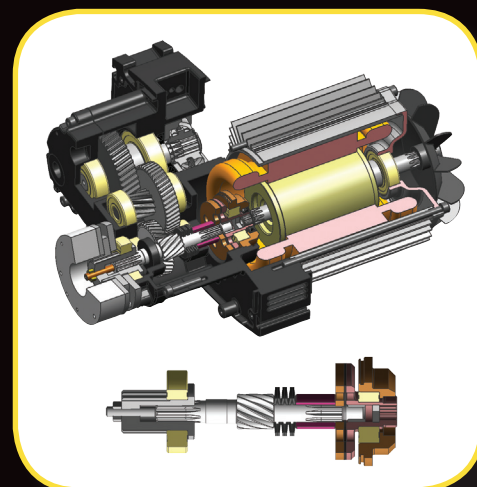
# LK ELECTRIC CHAIN HOIST PRODUCTS

**R&M**  
MATERIALS  
HANDLING  
INC.

**R&M**  
MATERIALS  
HANDLING  
INC.  
[www.rmhoist.com](http://www.rmhoist.com)



[www.rmhoist.com](http://www.rmhoist.com)



## LK Electric Chain Hoists Standard Features:

- 1/8 to 2 ton capacities (125 kg - 2000 kg) / Single fall up to 1 ton (1000 kg), two fall up to 2 tons (2000 kg)
- 10, 15 and 20 ft. (3, 4.5 and 6 m) lifts standard; additional lifting heights available up to 98 ft. (30 m) single fall, 49 ft. (15 m) two fall
- Two-speed TMU trolley drive unit (trolley speed is 80/20 FPM)
- Trolley brake, drop lugs and bumpers are standard
- Variable frequency drive option on TMU
- Various hoist suspensions including hook, push trolley & motorized trolley (TMU)
- Disc brake positioned after the mechanical overload device (clutch); on the load path
- High density polyethylene black chain container
- Two or three step helical gear

# LK ELECTRIC CHAIN HOIST INNOVATIVE STANDARD FEATURES

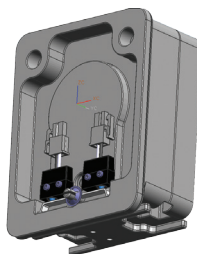


## Innovative Slip Clutch & Brake:

- DC brake for quiet operation; IP66 protection class
- Easy to adjust slip clutch/overload device
- Hoist brake designed to last for the DWP of the hoist. No air gap adjustment required
- Disc brake is positioned after the clutch on load path
- Design enables brake to hold load without interaction of the clutch

## Electrical Limit Switch:

- Rocker style electrical limit, protected inside hoist body
- Limit switch triggered by rubber protection of bottom block or rubber cased fall stop on loose end
- Mounted to pressure cast aluminum chain chain guide

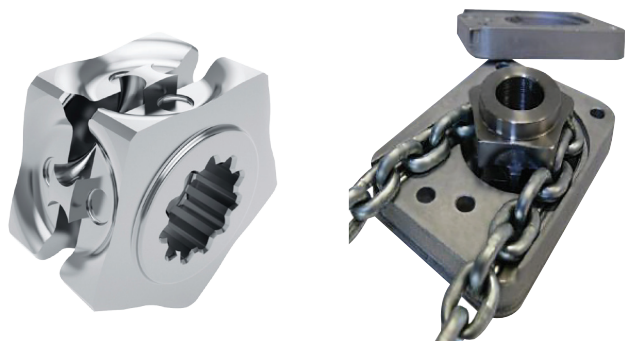


## Toughest Gearbox In The Business:

- Minimum AGMA 10 heat treated helical gearing
- Permanently lubricated gearbox for the DWP of the hoist
- Quiet gear train – < 70 db - Maximum

## Load Wheel:

- Precision manufactured, hardened load wheel
- Patented load wheel with five intermediate teeth; low noise, less chain wear, for smooth and quiet operation



## Control:

- Voltage control 48 VAC (50 Hz) or 115 VAC (60 Hz)
- Single speed hoists are voltage re-connectable for 208, 230, 460V/3/60 Hz and easily re-connectable with plug and fuse change

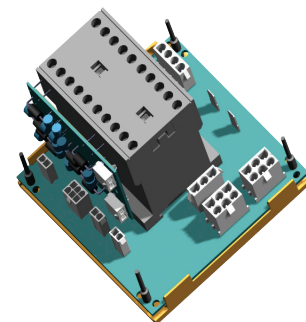
## LK Electric Chain Hoists:

- All R&M hoists are statically and dynamically tested with a minimum of 125% rated load prior to shipping
- ASME HST-1
- ASME B30.16
- EC Declaration of Conformity
- CSA approval (60 Hz, 115 VAC models only)
- RoHS Compliant
- Plug-in push button pendant with E-stop & built in mainline contactor are standard
- Integral hoist control panel and push button enclosures both meet NEMA type 3R (IP55) protection classification



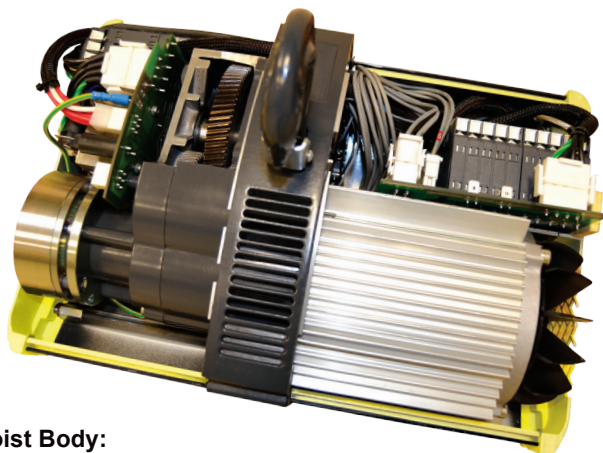
## Innovative Performance with Easy Operations:

- Power and control plugs for quick assembly and disassembly
- Electrics split on two main printed circuit boards (PCB)
- Power and motor control PCB
- Electrical cover safety cables retain fasteners during service
- Electrical components designed for plug and play
- Easily replaceable components (including hoist motor)
- Easy access to internal chain guide and sprocket - Can be easily inspected and replaced



## High Performance TEFC (Totally Enclosed Fan Cooled) Motor:

- Heavy duty type 50% ED rating (exceeds 30 min. rating) on three phase motors
- IP55 protection; Class F Insulation
- Optimum cooling with ribbed aluminum construction motor for maximum surface area
- Motor thermal protection with bi-metal switch



## Hoist Body:

- Constructed of pressure-cast aluminum
- 70µm epoxy painted for corrosion resistance



4501 Gateway Blvd. Springfield, OH 45502 | PH: (937) 328-5100 | Fax: (937) 325-5319 | [www.rmhoist.com](http://www.rmhoist.com)

The publication is for general informational purposes only and we reserve the right at any time to alter the product design and specifications. No statement of the publication shall be construed as a warranty or condition, express or implied, as to any product, its fitness for any particular purpose, merchantability, quality or representation of the terms of any sales agreement. Bulletin No. #LK-2014 © 2014, R&M Materials Handling, Inc.